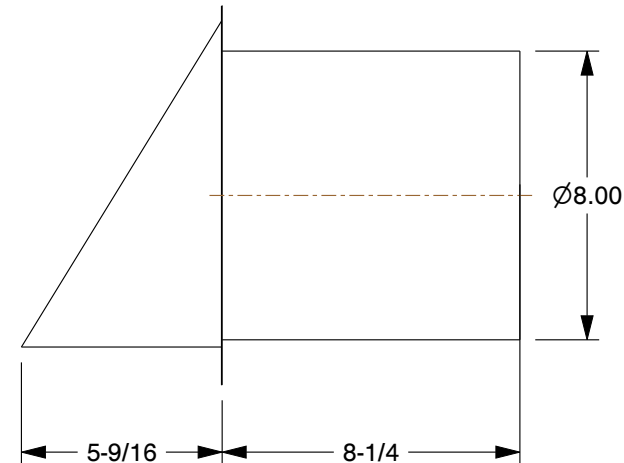


MATERIAL / COLOR	TYPES OF CATEGORIES & FAMCO PART NUMBER		
	WITH DAMPER	WITH SCREEN	WITH DAMPER AND SCREEN
A - ALUMINUM	DWV8A	SWV8A	SDWV8A
CU - COPPER	DWV8CU	SWV8CU	SDWV8CU
G - GALVANIZED	DWV8G	SWV8G	SDWV8G
PL - PAINT LOCK	DWV8PL	SWV8PL	SDWV8PL
WH - WHITE	DWV8WH	SWV8WH	SDWV8WH
BR - BROWN	DWV8BR	SWV8BR	SDWV8BR
BK - BLACK	DWV8BK	SWV8BK	SDWV8BK



NOTES:

1. QUALITY CONSTRUCTED FROM HEAVY-DUTY 28 GAUGE GALVANIZED STEEL, 24 GAUGE COPPER, OR 0.02 MILL-FINISHED ALUMINUM.
2. AVAILABLE WITH A BUILT-IN HINGED BACKDRAFT DAMPER TO ALLOW STEADY AIR FLOW WHEN VENTING.
3. AVAILABLE WITH 1/4 INCH INSECT SCREEN TO PREVENT BIRDS AND MANY KINDS OF INSECTS FROM ENTERING THE DUCT.
4. AVAILABLE WITH STANDARD 8 1/4" LONG GALVANIZED STEEL TUBE OR 1 1/2" SHORT TUBE, BUILT INTO FLANGE FOR WALL MOUNTED INSTALLATION.



5450 E Franklin Road
#104 Nampa
ID 83687, USA
Ph: 800-234-1903

This file and any associated information and specifications are provided for reference and evaluation purposes only, and is subject to change without notice. FAMCO makes no representations, warranties or guarantees as to the appropriateness, accuracy, completeness, or suitability for any purpose, of the file, information or specifications. You are solely responsible for the use of the file, information or specifications.

8" HOODED WALL VENTS
(Refer to the part number mentioned in the above table)

SCALE	NTS
UNIT	INCH
SHEET	1 of 1