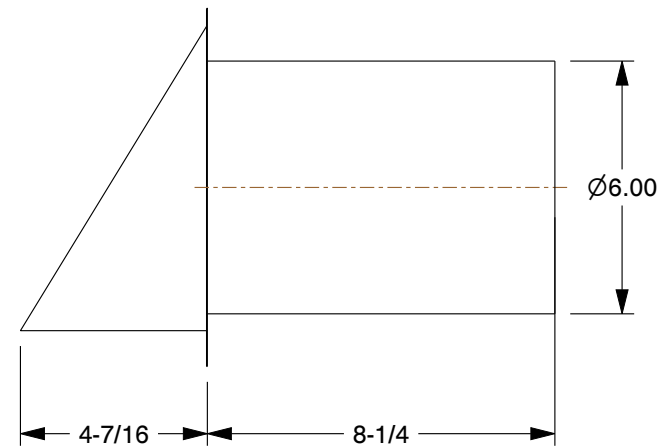


MATERIAL / COLOR	TYPES OF CATEGORIES & FAMCO PART NUMBER		
	WITH DAMPER	WITH SCREEN	WITH DAMPER AND SCREEN
A - ALUMINUM	DWV6A	SWV6A	SDWV6A
CU - COPPER	DWV6CU	SWV6CU	SDWV6CU
G - GALVANIZED	DWV6G	SWV6G	SDWV6G
PL - PAINT LOCK	DWV6PL	SWV6PL	SDWV6PL
WH - WHITE	DWV6WH	SWV6WH	SDWV6WH
BR - BROWN	DWV6BR	SWV6BR	SDWV6BR
BK - BLACK	DWV6BK	SWV6BK	SDWV6BK



NOTES:

1. QUALITY CONSTRUCTED FROM HEAVY-DUTY 28 GAUGE GALVANIZED STEEL, 24 GAUGE COPPER, OR 0.02 MILL-FINISHED ALUMINUM.
2. AVAILABLE WITH A BUILT-IN HINGED BACKDRAFT DAMPER TO ALLOW STEADY AIR FLOW WHEN VENTING.
3. AVAILABLE WITH 1/4 INCH INSECT SCREEN TO PREVENT BIRDS AND MANY KINDS OF INSECTS FROM ENTERING THE DUCT.
4. AVAILABLE WITH STANDARD 8 1/4" LONG GALVANIZED STEEL TUBE OR 1 1/2" SHORT TUBE, BUILT INTO FLANGE FOR WALL MOUNTED INSTALLATION.



5450 E Franklin Road
#104 Nampa
ID 83687, USA
Ph: 800-234-1903

This file and any associated information and specifications are provided for reference and evaluation purposes only, and is subject to change without notice. FAMCO makes no representations, warranties or guarantees as to the appropriateness, accuracy, completeness, or suitability for any purpose, of the file, information or specifications. You are solely responsible for the use of the file, information or specifications.

6" HOODED WALL VENTS

(Refer to the part number mentioned in the above table)

SCALE	NTS
UNIT	INCH
SHEET	1 of 1