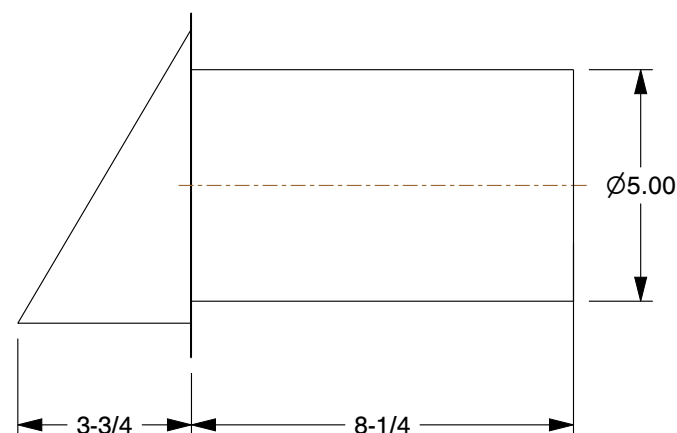
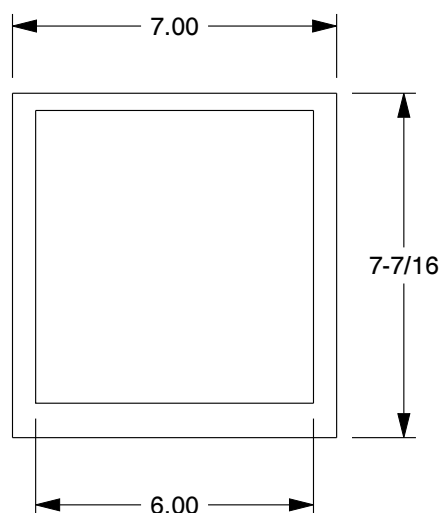


MATERIAL / COLOR	TYPES OF CATEGORIES & FAMCO PART NUMBER		
	WITH DAMPER	WITH SCREEN	WITH DAMPER AND SCREEN
A - ALUMINUM	DWV5A	SWV5A	SDWV5A
CU - COPPER	DWV5CU	SWV5CU	SDWV5CU
G - GALVANIZED	DWV5G	SWV5G	SDWV5G
PL - PAINT LOCK	DWV5PL	SWV5PL	SDWV5PL
WH - WHITE	DWV5WH	SWV5WH	SDWV5WH
BR - BROWN	DWV5BR	SWV5BR	SDWV5BR
BK - BLACK	DWV5BK	SWV5BK	SDWV5BK



#### NOTES:

1. QUALITY CONSTRUCTED FROM HEAVY-DUTY 28 GAUGE GALVANIZED STEEL, 24 GAUGE COPPER, OR 0.02 MILL-FINISHED ALUMINUM.
2. AVAILABLE WITH A BUILT-IN HINGED BACKDRAFT DAMPER TO ALLOW STEADY AIR FLOW WHEN VENTING.
3. AVAILABLE WITH 1/4 INCH INSECT SCREEN TO PREVENT BIRDS AND MANY KINDS OF INSECTS FROM ENTERING THE DUCT.
4. AVAILABLE WITH STANDARD 8 1/4" LONG GALVANIZED STEEL TUBE OR 1 1/2" SHORT TUBE, BUILT INTO FLANGE FOR WALL MOUNTED INSTALLATION.



5450 E Franklin Road  
#104 Nampa  
ID 83687, USA  
Ph: 800-234-1903

This file and any associated information and specifications are provided for reference and evaluation purposes only, and is subject to change without notice. FAMCO makes no representations, warranties or guarantees as to the appropriateness, accuracy, completeness, or suitability for any purpose, of the file, information or specifications. You are solely responsible for the use of the file, information or specifications.

**5" HOODED WALL VENTS**  
(Refer to the part number mentioned in the above table)

SCALE	NTS
UNIT	INCH
SHEET	1 of 1