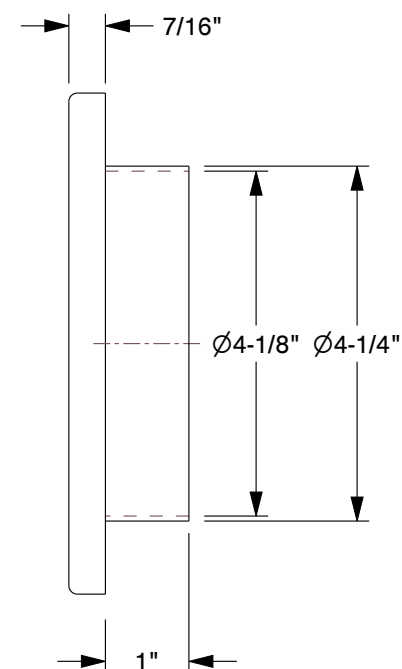
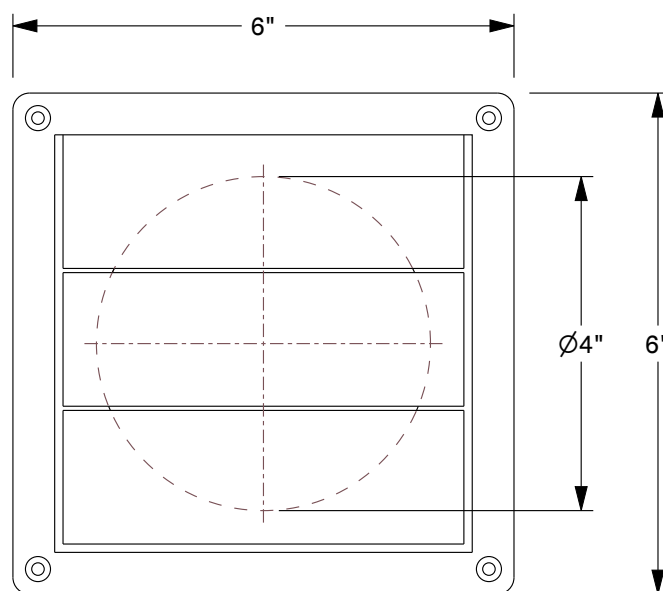




| MATERIAL / COLOR | FAMCO PART NUMBER |
|------------------|-------------------|
| WH - WHITE       | LH4WH             |
| BR - BROWN       | LH4BR             |



#### NOTES:

1. QUALITY CONSTRUCTED FROM POLYPROPYLENE PLASTIC.
2. MOVEABLE LOUVERS FOR CONSISTENT AIR FLOW WHEN VENTING.
3. CAN BE CONNECTED TO DUCT MEASURING 4 INCH DIAMETER.
4. PLASTIC VENT GUARD IS AVAILABLE FOR USE WITH 4 INCH PIPE MODELS (SOLD SEPARATELY).



5450 E Franklin Road  
#104 Nampa  
ID 83687, USA  
Ph: 800-234-1903

This file and any associated information and specifications are provided for reference and evaluation purposes only, and is subject to change without notice. FAMCO makes no representations, warranties or guarantees as to the appropriateness, accuracy, completeness, or suitability for any purpose, of the file, information or specifications. You are solely responsible for the use of the file, information or specifications.

#### 4" POLYMER WALL VENT WITH MOVABLE LOUVERS

(Refer to the part number mentioned in the above table)

|       |        |
|-------|--------|
| SCALE | NTS    |
| UNIT  | INCH   |
| SHEET | 1 of 1 |