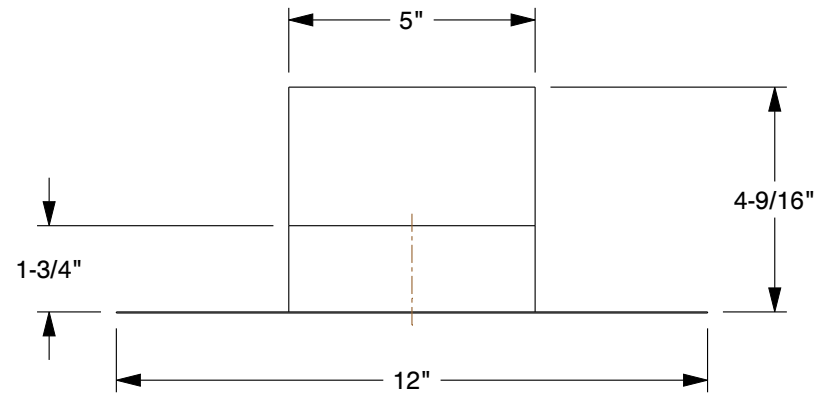
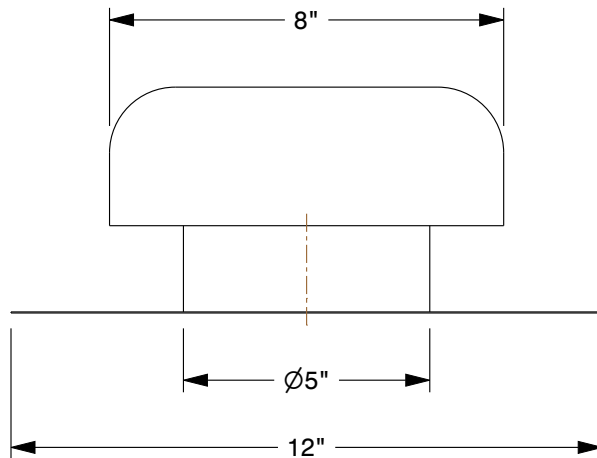


MATERIAL / COLOR	FAMCO PART NUMBER
CU - COPPER	JV5CU
G - GALVANIZED	JV5
BR - BROWN	JV5BR
BK - BLACK	JV5BK



NOTES:

1. QUALITY CONSTRUCTED FROM HEAVY-DUTY 28-26 GAUGE GALVANIZED STEEL, DEPENDING ON SIZE.
2. GREAT FOR ATTIC (STATIC) VENTILATION AND CAN BE USED WITH MOST ROOFING MATERIALS.
3. PROVIDES A LOW SILHOUETTE AND IS OPEN ON TWO SIDES FOR BETTER AIR FLOW.
4. HELPS ELIMINATE ATTIC MOISTURE AND HEAT BUILD-UP.
5. WORKS BEST WHEN USED WITH SOFFIT OR GABLE END VENTING.



5450 E Franklin Road
#104 Nampa
ID 83687, USA
Ph: 800-234-1903

This file and any associated information and specifications are provided for reference and evaluation purposes only, and is subject to change without notice. FAMCO makes no representations, warranties or guarantees as to the appropriateness, accuracy, completeness, or suitability for any purpose, of the file, information or specifications. You are solely responsible for the use of the file, information or specifications.

5" J VENT
(Refer to the part number mentioned in the above table)

SCALE	NTS
UNIT	INCH
SHEET	1 of 1