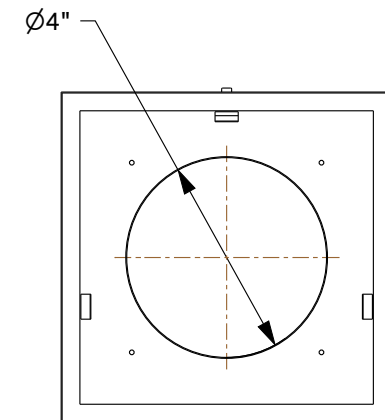
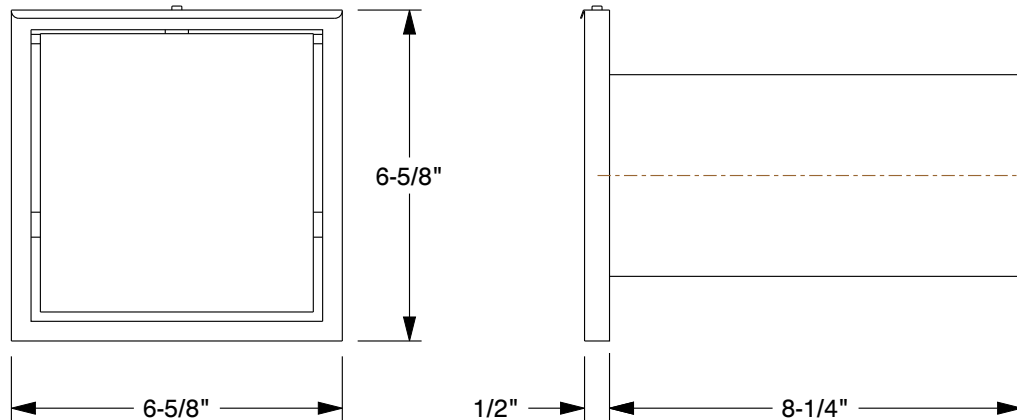


MATERIAL / COLOR	FAMCO PART NUMBER
G - GALVANIZED	FWV4-8.25
PL - PAINT LOCK	FWV4PL-8.25
ZA - ZINC ALUMINUM	FWV4ZA-8.25



NOTES:

1. QUALITY CONSTRUCTED FROM ZINC-ALUMINUM, GALVANIZED STEEL, OR PAINT LOCK WHICH CAN BE PRE-TREATED AND PAINTED BEFORE BEING INSTALLED.
2. FLUSH WALL VENT INCLUDES 8-1/4 INCH TUBE.
3. DESIGNED FOR 4 INCH THROUGH-WALL DRYER VENTILATION.



5450 E Franklin Road
#104 Nampa
ID 83687, USA
Ph: 800-234-1903

This file and any associated information and specifications are provided for reference and evaluation purposes only, and is subject to change without notice. FAMCO makes no representations, warranties or guarantees as to the appropriateness, accuracy, completeness, or suitability for any purpose, of the file, information or specifications. You are solely responsible for the use of the file, information or specifications.

4" FLUSH MOUNT WALL VENT WITH DAMPER & EXTENSION

(Refer to the part number mentioned in the above table)

SCALE	NTS
UNIT	INCH
SHEET	1 of 1