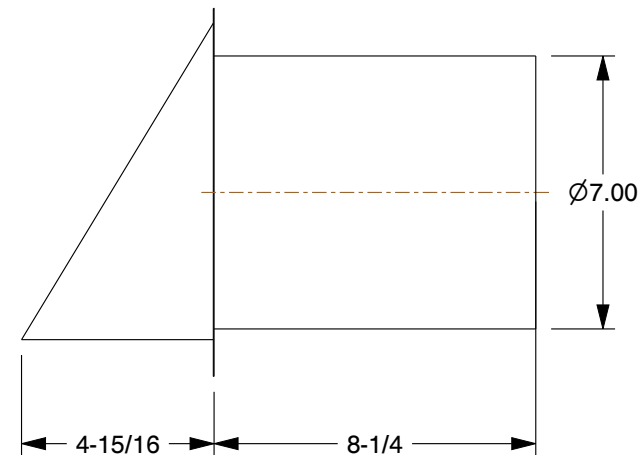


MATERIAL / COLOR	TYPES OF CATEGORIES & FAMCO PART NUMBER		
	WITH DAMPER	WITH SCREEN	WITH DAMPER AND SCREEN
A - ALUMINUM	DWV7A	SWV7A	SDWV7A
CU - COPPER	DWV7CU	SWV7CU	SDWV7CU
G - GALVANIZED	DWV7G	SWV7G	SDWV7G
PL - PAINT LOCK	DWV7PL	SWV7PL	SDWV7PL
WH - WHITE	DWV7WH	SWV7WH	SDWV7WH
BR - BROWN	DWV7BR	SWV7BR	SDWV7BR
BK - BLACK	DWV7BK	SWV7BK	SDWV7BK



**NOTES:**

1. QUALITY CONSTRUCTED FROM HEAVY-DUTY 28 GAUGE GALVANIZED STEEL, 24 GAUGE COPPER, OR 0.02 MILL-FINISHED ALUMINUM.
2. AVAILABLE WITH A BUILT-IN HINGED BACKDRAFT DAMPER TO ALLOW STEADY AIR FLOW WHEN VENTING.
3. AVAILABLE WITH 1/4 INCH INSECT SCREEN TO PREVENT BIRDS AND MANY KINDS OF INSECTS FROM ENTERING THE DUCT.
4. AVAILABLE WITH STANDARD 8 1/4" LONG GALVANIZED STEEL TUBE OR 1 1/2" SHORT TUBE, BUILT INTO FLANGE FOR WALL MOUNTED INSTALLATION.



5450 E Franklin Road  
#104 Nampa  
ID 83687, USA  
Ph: 800-234-1903

This file and any associated information and specifications are provided for reference and evaluation purposes only, and is subject to change without notice. FAMCO makes no representations, warranties or guarantees as to the appropriateness, accuracy, completeness, or suitability for any purpose, of the file, information or specifications. You are solely responsible for the use of the file, information or specifications.

**7" HOODED WALL VENTS**  
(Refer to the part number mentioned in the above table)

SCALE	NTS
UNIT	INCH
SHEET	1 of 1