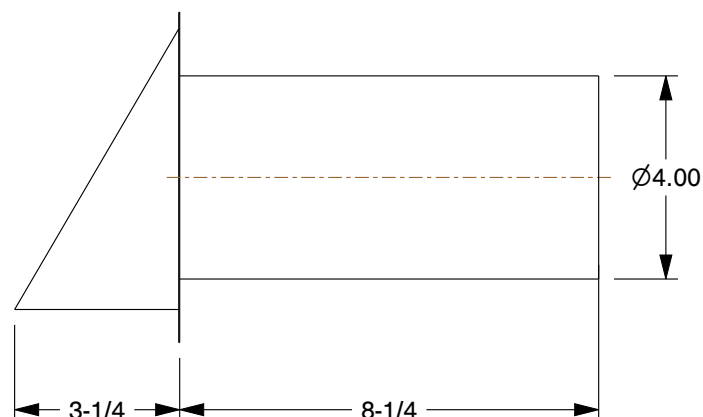
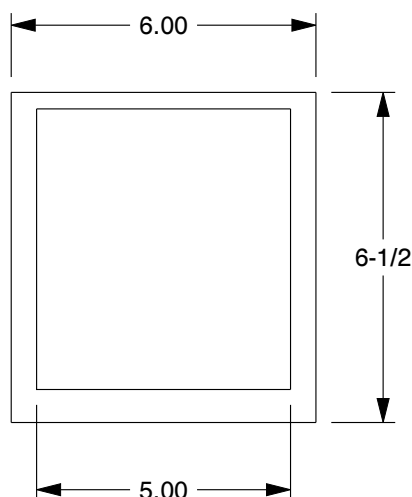


MATERIAL / COLOR	TYPES OF CATEGORIES & FAMCO PART NUMBER		
	WITH DAMPER	WITH SCREEN	WITH DAMPER AND SCREEN
A - ALUMINUM	DWV4A	SWV4A	SDWV4A
CU - COPPER	DWV4CU	SWV4CU	SDWV4CU
G - GALVANIZED	DWV4G	SWV4G	SDWV4G
PL - PAINT LOCK	DWV4PL	SWV4PL	SDWV4PL
WH - WHITE	DWV4WH	SWV4WH	SDWV4WH
BR - BROWN	DWV4BR	SWV4BR	SDWV4BR
BK - BLACK	DWV4BK	SWV4BK	SDWV4BK



NOTES:

1. QUALITY CONSTRUCTED FROM HEAVY-DUTY 28 GAUGE GALVANIZED STEEL, 24 GAUGE COPPER, OR 0.02 MILL-FINISHED ALUMINUM.
2. AVAILABLE WITH A BUILT-IN HINGED BACKDRAFT DAMPER TO ALLOW STEADY AIR FLOW WHEN VENTING.
3. AVAILABLE WITH 1/4 INCH INSECT SCREEN TO PREVENT BIRDS AND MANY KINDS OF INSECTS FROM ENTERING THE DUCT.
4. AVAILABLE WITH STANDARD 8 1/4" LONG GALVANIZED STEEL TUBE OR 1 1/2" SHORT TUBE, BUILT INTO FLANGE FOR WALL MOUNTED INSTALLATION.



5450 E Franklin Road
#104 Nampa
ID 83687, USA
Ph: 800-234-1903

This file and any associated information and specifications are provided for reference and evaluation purposes only, and is subject to change without notice. FAMCO makes no representations, warranties or guarantees as to the appropriateness, accuracy, completeness, or suitability for any purpose, of the file, information or specifications. You are solely responsible for the use of the file, information or specifications.

4" HOODED WALL VENTS
(Refer to the part number mentioned in the above table)

SCALE	NTS
UNIT	INCH
SHEET	1 of 1